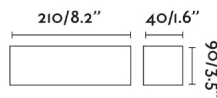
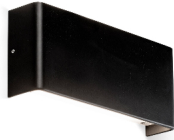


NASH 210 8W is a black wall lamp for interior lighting with light up and down. This luminaire is perfect for lighting corridors and rooms.



General characteristics

Fixation	Wall
Type	I
IP	20
voltage	220V-240V
Hertz	50/60Hz
included battery	.
Power	8W

Material

Body/Structure	Aluminium
Diffuser	PC

Finish

Body/Structure	Matt Black
Diffuser	Opal

Lighting characteristics

Light source included	Yes
Temperature	3000K
	
LM	450lm
CRI	>80
Light direction	Indirect lighting
Energy classification	E

Driver

Requires Driver	Yes
Driver embedded	Yes

File download

General documents	Download >
Images	Download >
	Download >
2D / 3D	Download >
	Download >
BIM	Download >