

Dandelion Chrysalis Dark

REFERENCE AP1527/7

DESCRIPTION

We die and reborn many times over this lifetime. We are cyclical beings, where each end leads to a new beginning, and therefore to a new opportunity. Like the sun and the moon, life and death are complementary opposites, which do not exist without each other, that sustain equilibrium and together define a "whole". In the reflex of this duality comes the Serip's Dandelion collection, that through its pieces reveals a darker and more abrupt side at the same time, that is subtle and graceful. Symbolising new beginnings and the idea of change, this collection is based on the dandelion's life cycle, that begins and ends with the blow of its seeds, which, when detached, hit the ground and give rise to new lives. This connection between life and death is a perfect metaphor settled on letting ourselves go with the flow of life, embracing the unknown and believing in the possibility of a new beginning, where every breath is a second chance!

Finish shown here Metal FO/PB | Glass 10

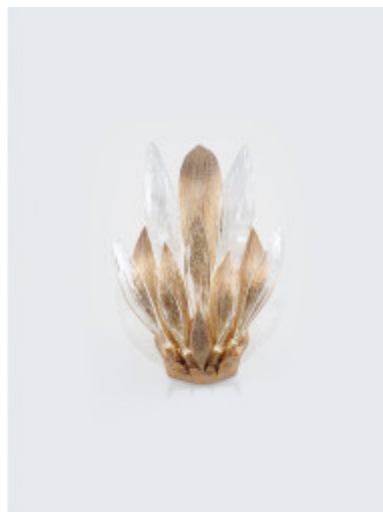
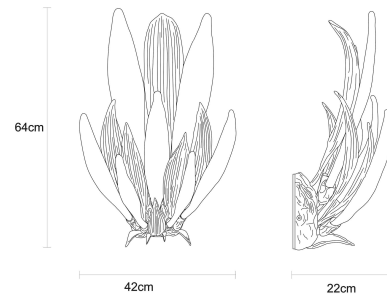
Designed and produced by hand in Portugal.

Serip reserves the right to make changes or improvements at any time it deems useful to guarantee the highest quality standards for its products.

Hand-finished, some variations may occur.

All the glass models are designed by Serip and exclusively handmade produced, establishing a unique and prestigious feature of the glass handwork art. For this reason, there is the possibility of variation in measures, weight, colour and shape represented.

TECHNICAL DRAWING



TECHNICAL SPECIFICATIONS

MEASUREMENTS

FIXTURE SIZE & WEIGHT

Width 22.00cm / 9.00in
Height 64.00cm / 25.00in
Length 42.00cm / 17.00in
Weight 12.00kg / 26.00lb

PACKAGE SIZE & WEIGHT

(m)Package 1/2 0.63m x 0.44m x 0.80m
=0.22CBM
(in)Package 1/2 24.81in x 17.33in x 31.50in
=7.77ft³

ELECTRIC FEATURE

Installation Wall
IP degree IP20

220-240V 50Hz-60Hz
Max Power Consumption 13W
Light Sources
7 x LED module 1,5W

Included Sources

Light Sources
7 x LED module 1,5W
Lumens 1260lm
Kelvin 2700
Dimming system 1-10V

Optional Sources

Light Sources
7 x LED module 1,5W
Lumens 1260lm
Kelvin 3000
Dimming system 1-10V

110-120V 50Hz-60hZ
Max Power Consumption 13W
Light Sources
7 x LED module 1,5W

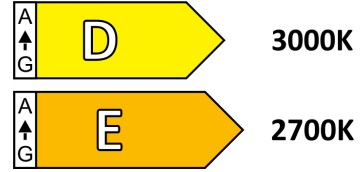
Included Sources

Light Sources
7 x LED module 1,5W
Lumens 1260lm
Kelvin 2700
Dimming system Phase Dimming

Optional Sources

Light Sources
7 x
Lumens 1260lm
Kelvin 3000
Dimming system Phase Dimming

ENERGY RATING



CARE INSTRUCTIONS

Due to the nature of our exquisite hand applied finishes, wipe clean with a soft, dry cloth or static duster must be used to clean the fixture.

Always avoid the use of harsh chemicals or abrasive cleaners as they may cause damage to the fixture's finish.

Cleaning is limited to the outer surfaces, shades or glass. It is important to ensure that no moisture enters the terminal compartment or reaches any live parts.

As our products are subject to technical modifications, we cannot guarantee, that all information is always up to date. Please contact our [technical department](#) with any queries.

SERIP

OPTIONAL FINISHES

METAL FINISHES



Lead (CH)



Copper (CO)



Gold (FO)



Gold/White Patina
(FO/PB)



Silver/White Patina
(FP/PB)



Silver (FP)



Palladium (PL)



Talha (TA)



Rose Gold (RO)



Black (PR)

GLASS FINISHES



Clear (10)

SERIP