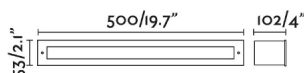




FALLS is a built-in with transparent diffuser perfect for all types of projects. It has IP65 which gives it high protection against rain and solid bodies. Adjustable option. With a heat temperature of 2700 K, this downlight allows warm, comfortable atmospheres to be created. 11W



General characteristics

Fixation	Floor
Type	III
IP	67
voltage	24V DC
included battery	.
Flush box	Yes
Flush box dimensions	520x53x100mm
Power	12W
IK	09
Cutting size	520x53mm

Material

Body/Structure	Stainless steel 316L
Diffuser	Glass

Finish

Body/Structure	Satin Stainless
Diffuser	Opal

Lighting characteristics

Light source included	Yes
Maximum ceiling thickness	32
Temperature	2700K
MacAdam Steps	3 SDCM
LM	291lm
CRI	>=90
Weight supported	1000Kg
Energy classification	F

Driver

Requires Driver	Yes
Driver embedded	No
Maximum driver information	24V CV

File download

Images	Download >
2D / 3D	Download >
	Download >
BIM	Download >

